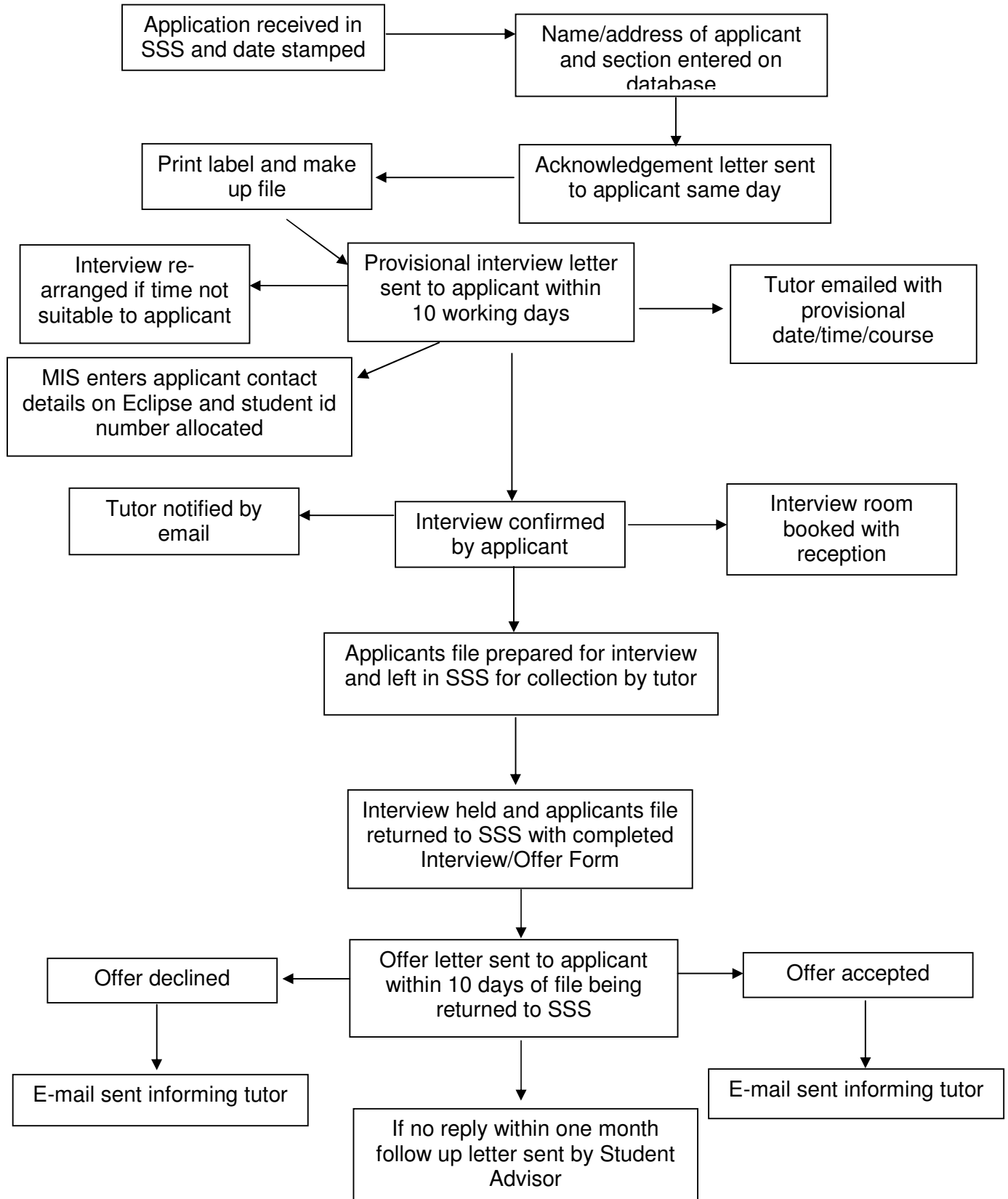


FULL-TIME APPLICATIONS PROCESS



The database is used to produce figures for the SMT so they are aware of possible numbers attending College and to send out information informing students about Induction, Enrolment, Bus Passes, Learner Support Fund etc., as part of the **Colleges 'Keep-warm' procedure** so it is important that **new and current students progressing onto another course are on the database.**